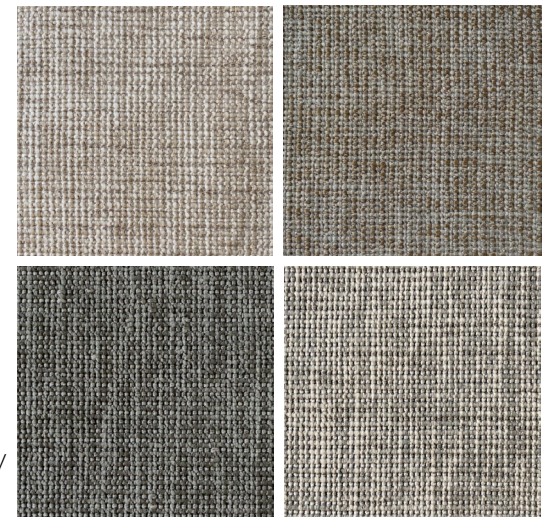




**Composition:** 65% Acrylic, 19% Polyester, 16% Viscose  
**Width:** 140cm / 54in  
**Weight:** 682 gsm / 20.1 ozyd<sup>2</sup>  
**Abrasion:** >50,000 Martindale Rubs  
**Pilling:** TWC TM 196 - 4-5/5  
**Fire Rating:** AS1530.3  
Cal TB 117-2013 - pass  
**Date:** January 2021  
**Usage:** Residential Upholstery  
Hospitality & Contract Upholstery  
**Origin:** Turkey  
**Care:** Machine Washable  
Dryclean (P)



## 5005-33 YARRA PARCHMENT

Yarra is a glamorous construction whose sophisticated neutrals were developed with our Turkish mill.

Our fabrics are durable, colourfast and easy to care for.

We recommend using professional cleaning services and regular maintenance to ensure the life of the fabric.

Vacuum regularly, using an upholstery brush to remove accumulated grit and dust.

Treat stains promptly, spills left too long will be harder to remove

Gently blot liquid spills with a damp cloth from the outside in. Avoid scrubbing.

For insoluble stains (gum, wax) rub with ice in a bag until brittle and scrape away with blunt knife

Do not over saturate or use heat. Always test cleaning on a hidden area first.

Multiple less aggressive cleaning is more effective than single heavy cleaning.

For full care instructions and terms visit [www.maaktextiles.com/terms](http://www.maaktextiles.com/terms)

# maak

ELEMENTS  
COLLECTIONS